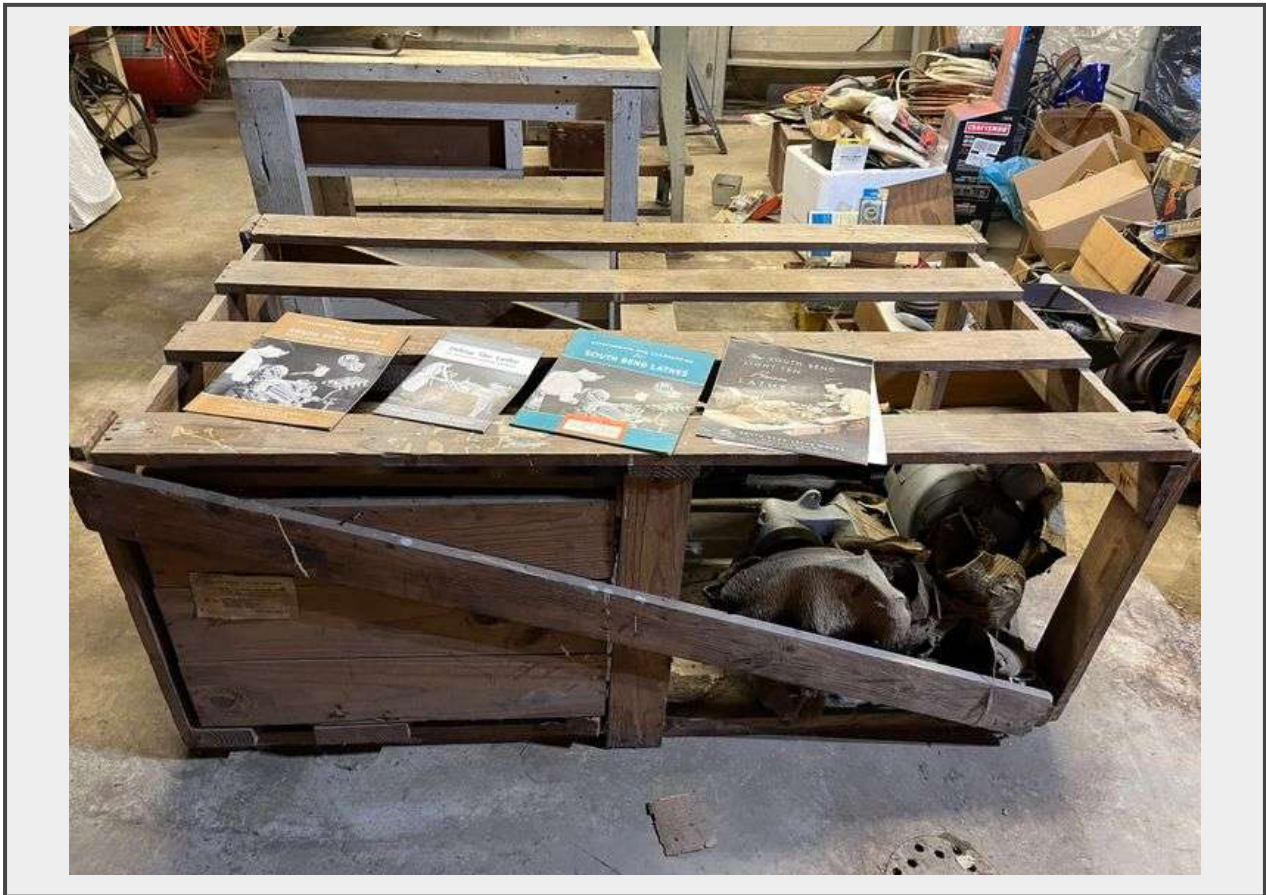


Sale Name: Ellwood City Tools (and more)

LOT 43000 - Metal Lathe. 1952 South Bend CL8644-A 9" 12 Speed Horizontal



Description

When I arrived, lathe was crated up. Consignor (former owner's daughter) said that she believes that it has never been used. I opened up crate and removed paper covering machine to get a better look, photographing as I unpacked.

Located in a basement, will need to go out a 30" man door, immediate right turn and directly up 10 concrete steps. VERY VERY HEAVY. I'd recommend renting a battery operated stair climbing dolly (can be rented in Cranberry for \$150/day). Come prepared with plenty of capable help. I'd expect you will need to remove components from the crate and carry up separately.

Must take all - not just a few components

Quantity: 1



<https://www.bidonestates.com/>